

book and lyrics by
**BRUCE JOEL
RUBIN**

directed by
**VICTORIA
BUSSERT**

music and lyrics by
**DAVE
STEWART**

music direction by
**MATTHEW
WEBB**

music and lyrics by
**GLEN
BALLARD**

choreography by
**LAUREN
TIDMORE**



GHOST
THE MUSICAL

FEBRUARY 10 - 26, 2023

Produced by special arrangement with Theatrical Rights Worldwide

17801 DETROIT AVENUE, LAKEWOOD, OH 44107
THEATER | EDUCATION | EXHIBITIONS | OUTREACH
beckcenter.org | 216.521.2540

Act one begins



Beck Center for the Arts

... WITH INVESTMENT BY CUYAHOGA ARTS & CULTURE

Cuyahoga Arts & Culture (CAC) uses public dollars approved by you to bring arts and culture to every corner of our County. From grade schools to senior centers to large public events and investments to small neighborhood art projects and educational outreach, we are leveraging your investment for everyone to experience.



Your Investment:
Strengthening Community

Visit cacgrants.org/impact to learn more.



BOARD OF DIRECTORS

Table with 3 columns listing Board of Directors members: M. Patricia Oliver (Chair), Ellen Todia (Chair-elect), Lucinda B. Einhouse (President and CEO), Mike O'Brien (Treasurer), Kathleen McGorray (Secretary), and Michael Brown, Jane Christyson.

HONORARY DIRECTORS

Table with 3 columns listing Honorary Directors: Deborah A. Bridwell, Ph.D., Ruth B. Bertrand, Cynthia Brogan, Nancy B. Calcott, Joel Egertson, David C. Estrop, Ph.D., Douglas Hoffman, Terry L. Jones, Andrew Killian, William J. Schmitt, Ronald Waldheger, and Marianne Monahan (President Beck Women's Board).

NATIONAL DIRECTORS

Alice Ripley Martin Savidge

MANAGEMENT TEAM

Table listing Management Team members and their roles: Lucinda B. Einhouse (President and Chief Executive Officer), Scott Spence (Artistic Director), Kristen Levy (Director of Development), Edward P. Gallagher, MT-BC (Director of Education), Julie Gilliland (Director of Marketing), and Larry J. Goodpaster (Director of Finance & Operations).

ADMINISTRATIVE AND PRODUCTION STAFF

Table listing Administrative and Production Staff members and their roles: Tracy Ammon, MT-BC (Associate Director of Creative Arts Therapies), Charles Battaglia (Development and Volunteer Manager), Sarah Clare (Associate Director, Theater Education), Joy DeMarco (Education Assistant), Mark DeVol (Technical Director), Kristina Edleman (Customer Experience Manager), Melinda Glass, MT-BC (Music Therapist), Ann Huebner (Registration Support Manager), Jay'da Hall (Annual Fund Coordinator), Tim Keehn (Facilities Manager), Bryce Evan Lewis (Development Associate), Ryan Lucas (Visual Communications Designer), Kelly Martin (Accounting Manager), Linda Merchant Pearce (Gallery Coordinator), Melinda Placko (Associate Director of Visual Arts & Music), Simon Sedmak (Associate Technical Director), Michael Simile, MT-BC (Music Therapist), Melanie Szucs (Associate Director, Dance Education), Jake Tisdale (Accounting Assistant), Rennie Tisdale (Customer Service Manager), Alessandra Rovito, Justine Horning, Paige Smith, Ivy Rook, Saige Rook (Customer Service Associates), and Riley Candow, Andrew Flinn, Jacob Matthews, Mike Jones (Facilities).

**DOBAMA
THEATRE**

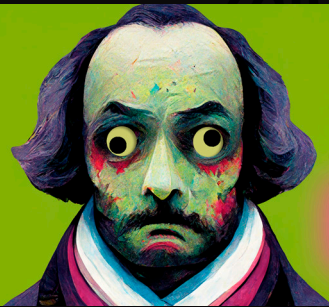


STEW

Written By
Zora Howard
Directed By
Nina Domingue

JANUARY 27 – FEBRUARY 19, 2023

WITH GENEROUS SUPPORT FROM



**WILLIAM
SHAKESPEARE'S
LAND OF THE
DEAD**

What fools these
immortals be!

Runs March
3 – 12, 2023

TICKETS:
beckcenter.org

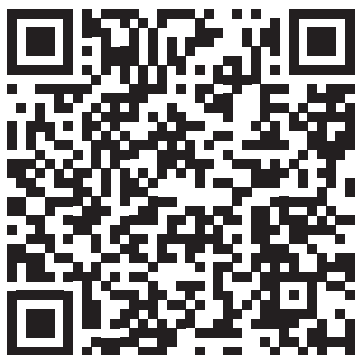


THE CAMPAIGN FOR BECK CENTER



HELP US RAISE THE REMAINING FUNDS NEEDED

- Add additional restrooms
- Build a new ADA accessible front entrance
- Build a marquee over the front entrance for the Senney Theater
- Double the size of the front yard pocket park, to expand our gathering space for the community
- RAISE THE ROOF to create additional space for dance and theater education
- From now until March 10, all new and upgraded gifts to the Creating Our Future capital campaign will be matched (up to \$150,000) by Beck Center Board Chair-elect Ellen Todia!



**MAKE YOUR
GIFT
ONLINE AT**
beckcenter.org/give

Assistive Listening Devices @ BECK CENTER

Assistive Listening Devices (ALDs) amplify and clarify sound by cutting down or eliminating ambient noise. Assistive Listening Systems are installed in both the Senney Theater and the Studio Theater and were completely overhauled during the summer of 2021 to improve sound quality and performance. Headsets may be used at any seat and, with the upgrade, induction neck loops are also now available for patrons who use hearing aids and cochlear implants with a “T” switch. **Ask your audiologist whether your hearing aid or cochlear implant has a “T” switch (telecoil) and how to use it with an assistive listening headset.**

Who can use an Assistive Listening Device?

Everyone! While induction neck-loops are only compatible with hearing aids and cochlear implants that include a “T” switch, the ear speaker can be used by anyone who wants a little volume boost.

Will the patrons next to me be disturbed by the Assistive Listening Device?

ALDs are designed to deliver sound directly to an individual and work using specific reserved radio frequencies so as to not conflict with any other devices or equipment in use by the theatre or our patrons. In addition, the ear speakers and the neck loops are designed to be as inconspicuous as possible. It’s likely no one will even know you’re using one.

Are Assistive Listening Devices available for every show and event at Beck Center?

YES! As long as the event is held inside the Senney or Studio Theater.

Do I need to request an Assistive Listening Device in advance?

You do not need to request an ALD in advance of arriving at the theatre and an ALD can be requested at any time during an event. ALDs are distributed on a first-come-first-served basis free of charge. You may request your ALD at the Customer Service desk in the Beck Center lobby.

Is there a cost for using an Assistive Listening Device?

No, ALDs are distributed free of charge on a first-come-first-served basis.

Do I need to sit in a specific place to use an Assistive Listening Device?

No, all of our ALDs will work from any seat in any of our three theatres.

Do you clean your Assistive Listening Devices?

Yes, we follow the manufactures maintenance recommendations and use antimicrobial wipes to clean all earpieces and neckloops when they are returned before placing them back into storage.

Do I need to arrive early to obtain an Assistive Listening Device?

While obtaining an ALD will not take very long, we strongly recommend that all patrons arrive AT LEAST 20 minutes before the performance to allow time to park, get to the theatre, and find your seat.

I have a hearing aid or cochlear implant, will an Assistive Listening Device work for me?

Induction neckloops are also now available for patrons who use hearing aids and cochlear implants with a “T” switch. Ask your audiologist whether your hearing aid or cochlear implant has a “T” switch (telecoil) and how to use it with an assistive listening headset. Patrons find this to be the best way to use the ALD’s.

I have severe hearing loss, will an Assistive Listening Device work for me?

ALDs will generally help anyone who can understand normal conversation either without aid or with a hearing aid. For more severe hearing loss, an ALD alone may not be enough.

**Questions? Just call Customer Service at
216.521.2540 or email boxoffice@beckcenter.org**

House Information

USE OF CAMERAS OR RECORDING DEVICES DURING THE PERFORMANCE IS PROHIBITED.

ACCESSIBILITY – Wheelchair ramps, an elevator, and accessible restrooms make all areas of Beck Center accommodating to all patrons. Theatergoers in wheelchairs should request seats in Row J.

CUSTOMER SERVICE HOURS – 9 a.m. to 8 p.m. Monday through Thursday; 9 a.m. to 5 p.m. Friday and Saturday; 12 p.m. to 5 p.m. Sunday; and open through intermission on performance dates. For ticket information visit beckcenter.org or call 216.521.2540.

CELL PHONES – Please turn off all cell phones and audible devices as the sound and screen light are distracting to the audience and especially the cast. Texting is not permitted during performances. Copyrights strictly prohibit the photographing, audio or video recording of all productions. Cameras and cell phones may be confiscated.

LARGE PRINT PLAYBILLS – Are available upon request at our Customer Service desk.

FIRE – Exits indicated by red lights are the shortest route to safety. In case of an emergency, please walk to the nearest exit.

LOST & FOUND – Customer Service maintains a Lost & Found service as a courtesy to our patrons. Please report any misplaced items, lost or found, immediately.

PARKING – Convenient, free, on-site parking.

RECYCLING – Beck Center believes in recycling. If you decide to discard your playbill, bottles or cans, please do so in the designated recycling receptacles.

RESTROOMS – Restrooms are located on the ground floor near the garden court at the west end of the Galleria and on the second floor just outside the elevator.

SMOKING – Beck Center is a non-smoking facility. Smoking is permitted outdoors.

About Beck Center

Beck Center for the Arts is proud to be a part of Northeast Ohio's professional theater landscape. Like our colleagues Playhouse Square, Cleveland Play House, Dobama Theatre, and Great Lakes Theater, Beck Center has a letter of agreement with Actors' Equity Association. We hire professional actors from the Northeast Ohio region, including members of Actors' Equity. Specifically, we are a Small Professional Theater (SPT) based on the number of seats, number of our performances, and the maximum weekly hours of work we provide to actors. We are also producing theater. We produce every show on our stages. Meaning we choose the play, cast and rehearse it, build the sets, props, and costumes, direct and perform the music, and design lights and sound, utilizing regional resources and talent, all for you, our valued patron of the arts. Thank you for supporting live theater!

Beck Center for the Arts
17801 Detroit Avenue, Lakewood, OH 44107

Lucinda B. Einhouse, President & CEO

Scott Spence, Artistic Director

presented by special arrangement with Theatrical Rights Worldwide

GHOST

THE MUSICAL

book and lyrics by
**BRUCE JOEL
RUBIN**

music and lyrics by
**DAVE
STEWART**

music and lyrics by
**GLEN
BALLARD**

directed by
**VICTORIA
BUSSERT**

music direction by
**MATTHEW
WEBB**

choreography by
**LAUREN
TIDMORE**

production stage manager
**JACK-ANTHONY
INA***

scenic design by
**JORDAN
JANOTA**

costume design by
**TESIA DUGAN
BENSON**

lighting design by
**RUSS
BORSKI**

sound design by
**ANGIE
HAYES**

Based on the Paramount Pictures film written by Bruce Joel Rubin

Original West End Production Produced by Colin Ingram, David Garfinkle,
Adam Silberman, Land Line Productions, Donovan Mannato, Michael Edwards
/ Carole Winter

“Unchained Melody” written by Hy Zaret and Alex North, courtesy of Unchained
Melody Publishing LLC

Orchestrations by David Abbinanti

Sponsored by



Video or audio recording of this production is strictly prohibited.

**Members of Actors' Equity Association, the Union of Actors and Stage Managers*

Run time 2 hours 15 minutes. This play will be performed with an intermission.

Cast of Characters

Mark Doyle	Sam Wheat
Jessi Kirtley	Molly Jensen
Colleen Longshaw*	Oda Mae Brown
Mike Bindeman	Carl Bruner
Danny Bó	Subway Ghost/Stanley/Passerby/Ensemble
Benjamin Michael Hall	Willie Lopez/Ensemble
Camille Brooks.....	Clara/Officer Wallace/Ensemble
Kechanté.....	Louise/First Nun/Ensemble
Bella Serrano	Mrs. Santiago/Bank Officer/Ensemble
Jeremy Alden.....	Minister/Detective Biederman/Ensemble
Richard Morgan.....	Hospital Ghost/Lionel Ferguson/Ensemble
Praise Oranika	Orlando Jones/Workman/Ensemble
Sydney Jaye.....	Ortisha Jones/Passerby/Ensemble
Izzy Baker	Hospital Patient/Second Nun/Ensemble
Avery Fahey.....	Ensemble/Swing
Kyle MacDonald	Ensemble/Swing

Production Staff

Artistic Director.....	Scott Spence
Director	Victoria Bussert
Music Director	Matthew Webb
Choreographer	Lauren Tidmore
Production Stage Manager	Jack-Anthony Ina*
Scenic Designer.....	Jordan Janota
Costume Designer.....	Tesia Dugan Benson
Lighting Designer.....	Russ Borski
Sound Designer.....	Angie Hayes
Fight Choreographer	Laura Welsh Berg*
BWMT Casting Director	Colleen Longshaw*
BW Production Manager	Eddie Coffield
Technical Director	Mark DeVol
Associate Technical Director.....	Simon Sedmak
Lighting Programmer	Jack-Anthony Ina*
Projection Consultant.....	Kasumi
Master Electrician	Logan Chapman
Electrics Assistant.....	Ryanne Fury
Video Programmers	Tim Chrisman, Jack-Anthony Ina*
Assistant Director.....	Kenna Wilson
Associate Music Director.....	Gideon Temple
Assistant Music Director/Keyboard Programmer	Chase Kessler
Assistant Stage Managers.....	DJ Brannan, Sarah Daniel, Jonathan Horowitz
Dance Captain/Fight Captain	Jeremy Alden
Sound A-2.....	Marius Pearson
Run Crew.....	Jacob Anderson, Julia Martin, Marius Pearson, Marvis Stevens
Spot Operators	Mary Kahelin, Reese Henrick
Assistant Costume Designer.....	Gracie Frazier
Wardrobe Supervisor	Betty Pitcher
Wardrobe Crew.....	Mateus Cardoso, Sami Dickens
Scenic Artists	Micaela Colleen Barrett, Sunwoo Chung

* Member of the Actors' Equity Association (AEA)

SONG LIST

Here Right Now	Molly & Sam
Unchained Melody.....	Sam
More	Carl & Ensemble
Three Little Words	Sam & Molly
Higher Spirits	Ensemble
You Gotta Let Go Now	Hospital Ghost
Lament	Sam
Are You a Believer	Oda Mae, Clara, Louise, and Ensemble
With You	Molly
Suspend My Disbelief/I Had a Life	Molly, Carl, Sam, and Ensemble
Rain/Hold On	Molly, Sam, and Ensemble
Unchained Melody (Reprise)	Sam
Life Turns on a Dime	Carl, Molly, and Sam
Focus	Subway Ghost
Nothing Stops Another Day	Molly
I'm Outta Here	Oda Mae & Ensemble
Unchained Melody (Dance)	Molly & Sam
Ascension	Sam

Orchestra

Violin	Evan Kleve
Viola	Ryan Detwiler
Cello	Hannah Benjamin
Bass	Jason Stebelton
Guitar	Michael Simile
Drums	Evan Mitchell
Keyboards	Matthew Webb (Conductor) & Chase Kessler
Electronic Music programmed by Matthew Webb	

Understudies

Camille Brooks.....	Molly Jensen
Jeremy Alden.....	Sam Wheat & Carl Bruner
Praise Oranika	Willie Lopez
Avery Fahey.....	covering Oda Mae Brown, Mrs. Santiago, Ortisha Jones
	Hospital Patient, Clara Louise
Kyle MacDonald	covering Subway Ghost, Minister, Hospital Ghost, Orlando Jones

Special Thanks

Tanya Long, and Melinda Placko for pottery consultation.

Who's Who in the Company



SCOTT SPENCE

(Artistic Director) is

enjoying his 31st season at Beck Center! Since 1990, he has produced over 200 shows, directing over 100 himself. The list of favorites grows every season, and

includes PARADE, A MAN OF NO IMPORTANCE, SWEENEY TODD, HAIR, PICASSO AT THE LAPIN AGILE, THE FARNSWORTH INVENTION, REEFER MADNESS, THE FIX, ZOMBIE PROM, BLOODY BLOODY ANDREW JACKSON, EVIL DEAD THE MUSICAL, THE 25TH ANNUAL PUTNAM COUNTY SPELLING BEE, and the box office smash hits THE PRODUCERS and ALTAR BOYZ. Recently, Scott added to those favorites with productions of CITY OF ANGELS and MATILDA. He is very proud of the awards and acclamations Beck Center for the Arts has received over the past decade, and is especially grateful for having won the Northern Ohio Live Award for Achievement in Theatre in 2006. Outside of these walls, Scott's directorial assignments have included a remounting of Beck Center for the Arts' hit production of ALTAR BOYZ at Playhouse Square's beautiful Hanna Theatre, DAS BARBECÜ at Opera Cleveland, THE LAST NIGHT OF BALLYHOO at Case Western Reserve University's Eldred Theatre, OH DAD POOR DAD.... at Cleveland State University Summer Stages, and NOISES OFF at both Weathervane Playhouse in Akron and Berea Summer Theatre. An adjunct faculty member at Cleveland State University, Scott has also had the privilege to direct Sartre's NO EXIT and Strindberg's MISS JULIE.

Scott holds an MFA in Directing from Western Illinois University and is a trained stage fight choreographer, having studied extensively with the SAFD. As always, he dedicates all the work he does to his two extraordinarily talented leading ladies, Rachel and Carleigh. You both amaze me every day.

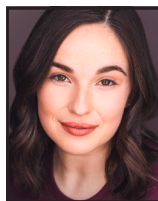


VICTORIA BUSSERT

(Director) is thrilled to direct another wonderful collaboration between Beck Center and Baldwin Wallace University Musical Theatre program. Her previous Beck Center directing credits include

LIZZIE, ONCE, HAIR, IN THE HEIGHTS, DOGFIGHT, CARRIE the Musical, NEXT TO NORMAL, SPRING

AWAKENING (Cleveland Critics Circle Award for Best Director 2012), PASSION, GREY GARDENS, and THE BREAKUP NOTEBOOK. Her work has been seen at many theaters around the country including Manhattan Theatre Club, Goodspeed Opera, Repertory Theatre of St. Louis, Portland Stage, Dallas Theatre Center, Cincinnati Playhouse, Anchorage Opera, and Firebrand Theatre, the first feminist musical theatre company in the country. Locally, she has directed for Cleveland Playhouse, Dobama Theater, Cleveland Opera, Cain Park (22 seasons) and The Cleveland Orchestra at Blossom. Favorite recent projects include the European and Chicago premieres of LIZZIE, MAMMA MIA for Idaho Shakespeare Festival/Great Lakes Theatre/Lake Tahoe Shakespeare Festival, THE SOUND OF MUSIC at Blossom and the wildest WILD PARTY at BW. Victoria is resident director for Great Lakes Theater and Director of Music Theatre at Baldwin Wallace University. Many thanks to Scott Spence for continuing this amazing collaboration, to Matt, Lauren, Laura, Jordan, Russ, Tesia and Jack for being such a joyous and creative dream team, to my students who continue to inspire and delight me, and to my sweet family -- Dale, Ondie and Lizzie who make it all worth it.



LAUREN TIDMORE

(Choreographer) is a graduate from Baldwin Wallace University. While at Baldwin Wallace, Lauren was involved in many productions with her favorite being the Academic Premiere

of KINKY BOOTS playing "Trish" while Dance Captaining and Assistant Choreographing. Regionally, Lauren has Assistant Choreographed SHREK the Musical at Beck Center playing "Fairy Godmother, Mama Ogre, Featured Ensemble" as well as Dance Captaining. In 2018 Lauren was the Assistant Choreographer for the Regional World Premiere of JANE EYRE with Cleveland Musical Theater, receiving a Cleveland Critics Circle Award for Best Choreography. Lauren made her choreographic debut in the Cleveland area with THE SOUND OF MUSIC this past summer in conjunction with Baldwin Wallace Music Theater at Blossom Music Center. She was also one of the Choreographers on THE WILD PARTY at Baldwin Wallace, fall 2022, and reprise choreographer of ELF at Beck Center. So much love to Vicky, Matt, Jack, and the entire creative team for the inspiration and support, the talented cast, my family, and sweet Jimmy.

**MATTHEW WEBB**

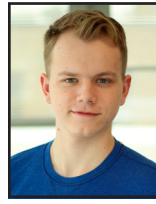
(Music Director) Matthew is Music Director of Music Theatre at Baldwin Wallace University: WILD PARTY, INTO THE WOODS, SPRING AWAKENING, KINKY BOOTS, BE MORE CHILL. His previous Beck

Center credits include LIZZIE, 5x15, SCOTTSBORO BOYS, ONCE, HAIR, BREAKUP NOTEBOOK, and PASSION. He is also resident music director at Great Lakes Theater, Idaho Shakespeare Festival, and Lake Tahoe Shakespeare Festival: LITTLE SHOP OF HORRORS, MUSIC MAN, MAMMA MIA, FOREVER PLAID, THE FANTASTICKS, SWEENEY TODD, SONDHEIM ON SONDHEIM, GUYS & DOLLS, CABARET, BAT BOY, THE MYSTERY OF EDWIN DROOD, INTO THE WOODS, A CHRISTMAS CAROL, A FUNNY THING HAPPENED ON THE WAY TO THE FORUM. As sound designer and composer for GLT/ISF/LTSF: THE 39 STEPS, THE TEMPEST, MUCH ADO ABOUT NOTHING, JULIUS CAESAR, TAMING OF THE SHREW, MACBETH, HAMLET. Many thanks to Vicky, Scott, and his amazing parents, Jerry & Carol.

**JACK-ANTHONY INA***
(Production Stage Manager)

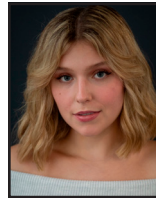
is a director, designer, and stage manager with over 250 credits. His work has been seen in Atlanta, New York City, and throughout

Northeast Ohio. He is a proud graduate of Baldwin Wallace University and a proud member of Actors' Equity Association. Special thanks to Vicky, Matt, Lauren, and the incredible designers, ASMs, cast, and crew! Recent Credits: A SOULFUL CHRISTMAS (Production Manager and Lighting Designer), THE WILD PARTY (Production Stage Manager), SWEENEY TODD (Choreographer and Lighting Designer), THE SOUND OF MUSIC (Production Stage Manager and Props Designer), THE LIGHTNING THIEF (Scenic/Lighting/Props Designer and Production Coordinator), THE COLOR PURPLE (Lighting Designer), KINKY BOOTS (Lighting/Video Designer), DISNEY'S NEWSIES (Director and Music Director/Conductor), SECRETS AT 54 BELOW (Director), THE SCOTTSBORO BOYS (Production Stage Manager), and BE MORE CHILL (Production Stage Manager). @jackanthonyina

CAST**JEREMY ALDEN**
(Minister/Detective Biederman/Ensemble/Dance Captain/Fight Captain/Sam u/s, Carl u/s)

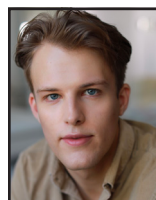
Regional: WEST SIDE STORY (Porthouse Theatre),

ELF (Beck Center). Baldwin Wallace University: THE WILD PARTY, INTO THE WOODS. Other: SINGIN' IN THE RAIN, URINETOWN, BRIGHT STAR, SHREK, HONOR AND THE RIVER, THE TEMPEST, TWELFTH NIGHT. Jeremy is a junior Music Theatre major at Baldwin Wallace University. Huge thanks to Vicky, Matt, Greg, and BWMT 24. Instagram: @jeremymichaelalden

**IZZY BAKER (Hospital Patient/Second Nun/Ensemble)**

is a freshman Music Theatre major from Las Vegas, Nevada, and has been performing in plays, musicals, and

vocal showcases for over ten years. She was a student director at her performing arts high school, and when not performing onstage, she is a certified lifeguard and camp counselor. She also enjoyed working as a party princess in her hometown. Recent credits include Ariel in "Footloose," Featured Dancer in "The Wild Party", Julia in "The Wedding Singer," Jenny in "Big Fish," and Ariel in "The Little Mermaid." She is thrilled to be spending her first semester performing with and learning from such a talented cast and crew. She would like to thank Vicky, Matt, and Lauren, and the team for this opportunity, and her parents, grandparents, friends, and boyfriend for their constant love and support.

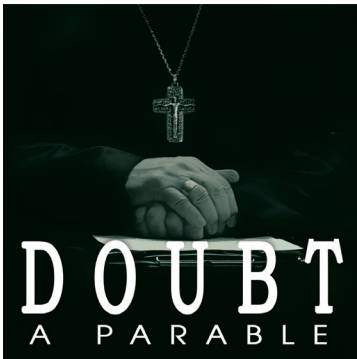
**MIKE BINDEMAN (Carl Bruner)**

Regional: THE LIGHTNING THIEF (Percy Jackson), MAMMA MIA (Sky), THE ROCKY HORROR SHOW (Rocky),



NOISES OFF | March 24 – April 16

Conceived when English playwright Michael Frayn was watching a performance from the wings, he said, “It was funnier from behind than in front, and I thought that one day I must write a farce from behind.” And write a fabulous farce he did! This play within a play was meta before meta was meta. Come watch a tennis match of hilarious comedy.



DOUBT | May 26 – June 25

This 2005 Pulitzer Prize-winner for Drama draws one into an issue of suspicion in the query of a Catholic school in the Bronx in the 1960s. Principal Sister Aloysius’s suspicions about the relationship between a priest, Father Flynn, and a young male student will raise questions long after you leave the theater.



ONCE ON THIS ISLAND | Jul 7 – Aug 6

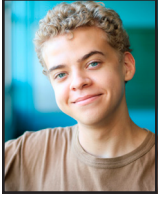
In this Tony Award-nominated musical, together we will swim away to the sands of the French Antilles in the glistening Caribbean Sea. A wise peasant girl on this tropical island uses the power of love and the beauty of acceptance to bring together very different people.

“Just what the weary world needs now” – Variety



FOR TICKETS AND INFORMATION, VISIT:
beckcenter.org

SOMETHING ROTTEN, KINKY BOOTS, SISTER ACT. Cleveland: LITTLE SHOP OF HORRORS, ROMEO & JULIET. Mike is a senior Music Theatre student at BW, and is a Chicago native. IG: @mike_bindeman



DANNY BÓ (Subway Ghost/Stanley/Passerby/Ensemble) is a Junior Music Theatre Major at Baldwin Wallace University. He was recently seen as Mercutio in

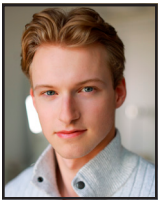
ROMEO AND JULIET at Great Lakes Theater. Other credits include INTO THE WOODS (Jack), THE SOUND OF MUSIC (Friedrich), and THE LIGHTNING THIEF: THE PERCY JACKSON MUSICAL (Percy). He thanks family & mentors for ongoing love & support.



CAMILLE BROOKS (Clara/Officer Wallace/Ensemble/Molly u/s)

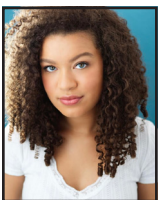
Regional: MAMMA MIA (Lake Tahoe Shakespeare Festival) Baldwin Wallace: INTO THE WOODS, SPRING

AWAKENING. One of her favorite credits include THE SOUND OF MUSIC (Blossom Music Center). INSTAGRAM: @camilleabrooks



MARK DOYLE (Sam Wheat) MAMMA MIA! (Lake Tahoe Shakespeare Festival), THE LIGHTNING THIEF (Playhouse Square), THE SOUND OF MUSIC (The Cleveland Orchestra), A

CHRISTMAS CAROL (Great Lakes Theater), SPRING AWAKENING, TWELFTH NIGHT (Baldwin Wallace University). Mark is a Senior at Baldwin Wallace University. He would like to thank his friends, family, and teachers for their support. @mark.c.doyle



AVERY FAHEY (Ensemble/Swing) is a freshman music theatre major at Baldwin Wallace University. Previous credits include Mrs. Lovett (SWEENEY TODD), Narrator (JOSEPH AND THE

AMAZING TECHNICOLOR DREAM COAT), and

Joanne (RENT). She sends all her love to her wonderful castmates, her parents, and Vicky Bussert for their continuous support.



BENJAMIN MICHAEL HALL (Willie Lopez/Ensemble)

[He/Her/They] Texas: TUCK EVERLASTING, A MIDSUMMER'S NIGHT DREAM, THE CRUCIBLE. Regional: THE WEDDING

SINGER (George), SISTER ACT (Pablo), STATE FAIR (Lem, Judge Henspensal, Fairtone). Benjamin Michael sends love to their mom, dad, and brother in Texas INSTAGRAM: @benjamichaell.



SYDNEY JAYE (Ortisha Jones/Passerby/Ensemble) is a senior

Music Theatre major at Baldwin Wallace University and this is her first time performing at Beck Center.

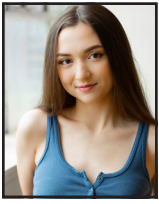
Some of her favorite roles include Julia Sullivan in THE WEDDING SINGER, Kate in THE WILD PARTY, and Velma Kelly in CHICAGO. Sydney Jaye is a senior Music Theatre major at Baldwin Wallace University and this is her first time performing at Beck Center. Some of her favorite roles include Julia Sullivan in THE WEDDING SINGER, Kate in THE WILD PARTY, and Velma Kelly in CHICAGO. She performed in her first musical at the age of 7 where she starred in WILLY WONKA JR. as Oompa Loompa #4 and since then she has been Broadway bound. As always, this performance is dedicated to her PopPop whose love for theatre was an inspiration.



KECHANTÉ (Louise/First Nun/Ensemble)

Recent Work: LITTLE SHOP OF HORRORS (Idaho Shakespeare Festival).

THE LIGHTNING THIEF: THE PERCY JACKSON MUSICAL (Playhouse Square). ANGELS IN AMERICA, DETROIT '67, DEAR (Baldwin Wallace). PIPPIN (Green Center). ONCE ON THIS ISLAND (Heights Youth Theater). Film: "System." See Kechanté as "Kyra" in BARE at Playhouse Square, March 31 - April 2. INSTAGRAM: @Kechante



JESSI KIRTLEY (Molly Jensen) Jessi is a junior Music Theatre major at Baldwin Wallace University. She was born and raised in Roswell, Georgia. Most recently, she was seen

as Lizzie Borden in LIZZIE at Beck Center. She spent last Summer at The Forestburgh Playhouse where she played Sophie in MAMMA MIA, Portia in SOMETHING ROTTEN, and Ensemble/u/s Lauren in KINKY BOOTS. She was also in BW's production of INTO THE WOODS as Rapunzel. She thanks Vicky, Sandy, Lauren, Kenna, and Laura for their support and guidance in this process. She also thanks her family for their endless encouragement.



COLLEEN LONGSHAW * (Oda Mae Brown) National Tour: KISS ME KATE. New York: THE GROOVE FACTORY. Regional: HAIRSPRAY (Northshore Music Theatre), THE FULL MONTY

(Northshore Music Theatre), CAROLINE OR CHANGE (Tantrum Theatre, Karamu/Dobama, Mercury Theatre). Cleveland: BLACKADEMICS (Cleveland Play House), PIPELINE (Cleveland Play House), THE PIANO LESSON, (Cleveland Play House), A CHRISTMAS CAROL (Great Lakes Theatre), THE COLOR PURPLE, (Karamu House), SISTER ACT (Karamu House, Porthouse Theatre), HURRICANE DIANE (Dobama Theatre), TWELFTH NIGHT (Ohio Shakespeare Theatre), DREAMGIRLS, (Cain Park), AIDA (Beck Center). IG: cocoloco_13 Thanks be to God.



KYLE MACDONALD (Ensemble/Swing) Kyle is making his BWMT and Beck Center debut. He would like to thank Vicky, Greg Harrell, and the entire production team for the opportunity.

Love to Mom & Dad for their support.



RICHARD MORGAN (Hospital Ghost/Lionel Ferguson/Ensemble)

Regional: THE MERRY WIVES OF WINDSOR (Festival 56), MATILDA (Festival 56), A GENTLEMAN'S GUIDE TO

LOVE AND MURDER (Festival 56), ROMEO AND JULIET (Great Lakes Theater). Other: LES MISÉRABLES, PIPPIN, MERRILY WE ROLL ALONG, LEGALLY BLONDE, PATIENT A, RENT, HEATHERS, GREASE, THE DROWSY CHAPERONE, HELLO DOLLY!, HIGH SCHOOL MUSICAL, TITLE OF SHOW, INTO THE WOODS, THE SOUND OF MUSIC. Reading: BELINDA. Upcoming: BARE: A POP OPERA. Richard is a junior Music Theater major at Baldwin Wallace University. Special thanks to Victoria Bussert, Matt Webb, Greg Daniels, Lauren Tidmore and his family for their continuous love and support.



PRaise ORANIKA (Orlando Jones/Workman/Ensemble, Willie u/s)

is currently a sophomore MT at Baldwin Wallace University. Cleveland: THE WILD PARTY (Black)

DETROIT '67 (Lank). Chicago: RENT (Collins) LEGALLY BLONDE (Emmett) Aida (Mereb) NOISES OFF (Lloyd).

INSTAGRAM: @praiseoranika



BELLA SERRANO (Mrs. Santiago/Bank Officer/Ensemble)

Regional: KINKY BOOTS, MAMMA MIA!, SOMETHING ROTTEN!, B.A.R.S., PERPETUAL SUNSHINE AND THE GHOST

GIRLS. Next, catch her as Brooke Ashton/Vicki in NOISES OFF at Beck Center for the Arts. Big thanks to all her friends and family! INSTAGRAM: @bellamserrano

PRODUCTION

DJ BRANNAN (Assistant Stage Manager)

Great Lakes Theatre: LITTLE SHOP OF HORRORS (A2). Baldwin Wallace University: EVERYBODY, THE CRUCIBLE (Sound Designer); TWELFTH NIGHT (Sound Designer/A1) INTO THE WOODS (A2); THE WILD PARTY (Audio Supervisor). Kindleberger Summer Festival: MAMMA MIA (Stage Manager). Kalamazoo Civic Theatre: RIPCORD (Stage Manager). DJ is a senior at Baldwin Wallace University, double majoring in Theatre: Design and Tech and Film Studies. He works as the Lead Technician in the Sound Department of the Scene Shop at Baldwin Wallace University. DJ would like to thank his friends and family for their support in his theatrical endeavors. Enjoy the show!

SARAH DANIEL (Assistant Stage Manager)

Cleveland: THE SOUND OF MUSIC (Cleveland Symphony Orchestra). Regional: NATURAL SHOCKS (Journey Theater Project). Washington, D.C.: MARJORIE IS DEAD, SHAKESPEARE IN LOVE (Keegan Theatre). Baldwin Wallace University: THE WILD PARTY, THE MODERN PROMETHEUS, MUSES ANONYMOUS, FYOO ZH EN '21: FLOOD CITY, PELLÉAS + MELISANDE, UNCLE VANYA, KINKY BOOTS. She would like to thank her friends and family for their support.

JONATHAN HOROWITZ (Assistant Stage Manager)

Baldwin Wallace Theatre and Dance (PSM) THE NETHER, DREAD FASCINATION. Baldwin Wallace Musical Theatre (ASM) INTO THE WOODS, LIGHTNING THIEF: THE PERCY JACKSON MUSICAL, FYOO ZH EN 2022 REVELRY OR RIOT. Jonathan is a sophomore stage management major at Baldwin Wallace and they would like to thank their friends and family.

GIDEON TEMPLE (Associate Music Director)

Regional: LIZZIE (Beck Center), NEWSIES (Byham Theater). Other: THE WILD PARTY (BWMT), URINETOWN (Suncoast). Gideon would like to thank Vicky, Matt, Ryan and Dr. Kim for their continued support. INSTAGRAM: @templebros

CHASE KESSLER (Assistant Music Director/Keyboard Programmer)

Professional: SOMETHING ROTTEN (Music

Director/Conductor/Electronic Music Design), CELEBRATING SONNHEIM (Music Director/Conductor), MAMMA MIA (Associate MD/Keyboard 3/Electronic Music Design), KINKY BOOTS (Associate MD/Keyboard 2/Electronic Music Design) - Forestburgh Playhouse, THE LIGHTNING THIEF (Associate MD/Electronic Music Design) – Playhouse Square, LIZZIE (Click Programmer) – Beck Center, CINDERELLA (Associate MD/Keyboard 1/Keyboard Programmer) - Near West Theater Educational: THE WILD PARTY (Associate MD/Keyboard Programmer), INTO THE WOODS (Assistant MD/Keyboard 2/Keyboard Programmer), TWELFTH NIGHT (Music Director/Composer) - Baldwin Wallace University. Community: RENT (Music Director/Conductor/Electronic Music Design), HAIRSPRAY (Music Director/Conductor/Keyboard Programmer) - Curtain Call Performing Arts Center

TESIA DUGAN BENSON (Costume Designer)

Selected costume design credits include LAND OF OZ, LIFE SUCKS, GROUNDED, and PETER AND THE STAR CATCHER for Dobama Theatre, THE SOUND OF MUSIC for The Cleveland Orchestra at Blossom, LA VOIX HUMAINE for Opera Cleveland, RAGTIME, MEMPHIS, and TOXIC AVENGER for Cain Park, DONTRELL, WHO KISSED THE SEA and ANCESTRA for Cleveland Public Theatre, and BENT and 'NIGHT MOTHER for Beck Center. Scenic design credits include EGRESS for Cleveland Play House as well as GROUNDED and REVOLT. SHE SAID. REVOLT AGAIN for Dobama Theatre. Other credits include designs for Apollo's Fire, Lakeland Civic Theater, Near West Theater, Keystone Repertory Theater, Baldwin Wallace University. Tesia is an Associate Professor in Costumes at Baldwin Wallace University and holds her M.F.A. in Costume Design from the University of Illinois at Urbana-Champaign. www.tesiaduganbenson.com

ANGIE HAYES (Sound Designer) has designed and mixed sound for productions at many area theaters, colleges, and high schools. She has also recorded and sound designed for several podcasts, including SIDEWALK, MUNCHEN, MN, and a radio play series for The Endangered Species Theatre Project of

Frederick, MD. She has a Bachelor Degree in Music from the University of Wisconsin Oshkosh, with an emphasis in Recording Technology and Music Business.

**Members of Actors' Equity Association, the Union of Actors and Stage Managers*

I'M NOT JUST YOUR
NEIGHBOR



I'M ALSO YOUR
**REAL ESTATE
AGENT**

WHETHER YOU ARE LOOKING TO BUY OR SELL,
I WOULD LOVE TO HELP!



TOP AGENT ON OHIO'S
#1 REAL ESTATE TEAM

RACHELLE LORAINE
REALTOR®

614-483-9569

Rachelle@EzSalesTeam.com

NEZSALESTEAM
A MEMBER OF THE EZ REFERRAL NETWORK

KW CITYWIDE
KELLER WILLIAMS.

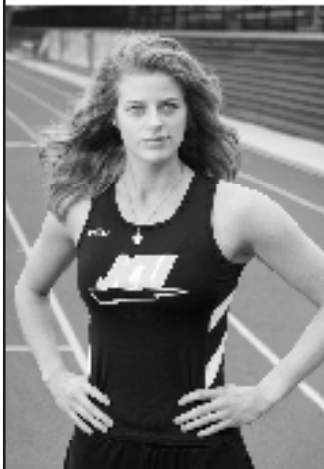


That time
Demi &
Patrick
took a

Beck Center
-FOR THE arts-

Pottery Class

ENROLL TODAY: beckcenter.org



Wetzler's
PHOTOGRAPHY

Advertising • Commercial • Editorial
216-771-1554 wetzlers.com

A celebration of diversity with programming in Theater, Music, Dance, Visual Arts, and Creative Arts Therapies

**APRIL 28
- JUNE 19**

DIVERSITY CELEBRATION AT BECK CENTER

- **April 28-29** - Razzle Dazzle
- **May 5-6** - MadJax Dance Company presents: *Gray Matters*
- **May 13** - Super Saturday
- **June 10** - Poetry Reading
- Art Talk with Megan Fitze, of Art Possible Ohio, and artists with disabilities

In the Gallery: *Accessible Expressions*

And more to come!

Beck Ambassador Of The Quarter



RACHEL ABERNATHY

When did you start volunteering at The Beck Center

10 years ago when I retired. I had friends who were already volunteers at Beck and I knew Rennie.

Favorite event/show?

I don't mean this just to say it - I enjoy everything I see at Beck Center - everything is great. Most importantly I can hear and understand everyone!

Meaningful Beck experience?

Being part of women's committee has been a very meaningful experience. As part of the committee, we sell tickets for the Wine Raffle and I'm proud to say that I helped sell many of those tickets this past year. I also enjoy encouraging new people to join our volunteer staff!

Why do you volunteer?

I live in Lakewood and I was looking to volunteer when I retired. Beck is a great place to volunteer but the warm-hearted Beck Staff and Community is what kept me coming back for all these years. I also volunteer at the Cleveland Zoo and the Cleveland Science Center.

How has your volunteer experience changed over the years?

I have become much closer to community and as my mobility has changed Beck Center has accommodated my disability to allow me to continue to be part of the volunteer staff. The Beck Center really has become my family.

What are your interests outside of the arts?

I used to love traveling! I've been to all 7 continents and you'd find me traveling at least 4 times a year. I was also an avid hiker, I hike 11,000 miles, and was a member of the Cleveland Hikers Club.

Thank you for all you do, Beck Ambassadors! Read the full interview in the latest edition of the Donor Digest, one of the benefits of making a financial contribution to Beck Center for the Arts! We rely on civic-minded individuals, like you, to help provide important volunteer services. Volunteers are a critical part of Beck Center's mission to inspire, enrich, and transform lives through dynamic arts experiences. For more information about volunteering, please visit:

beckcenter.org/about/volunteer

For Volunteer Information Contact:
Charles Battaglia, Development & Volunteer Manager
cbattaglia@beckcenter.org

Beck Center Annual Contributors

We gratefully acknowledge the support of the following individuals, corporations, foundations, government grants, and organizations, which have contributed to Beck Center for the Arts' Annual Fund in support of our mission to inspire, enrich, and transform lives through dynamic arts experiences.

The current listing includes donors of \$250 or more to the Annual Fund, between November 2, 2021 and February 2, 2023. We greatly appreciate all of our supporters. For any corrections or more information on the benefits of these giving circles, please contact our Director of Development, Kristen Levy, at klevy@beckcenter.org or 216.521.2540.

INDIVIDUALS, FOUNDATIONS, CORPORATIONS AND ORGANIZATIONS

LEADERSHIP CIRCLE

(\$10,000 and above)

Rachel Abernethy
Milan G. Busta*
The Cleveland Foundation
Community West Foundation
Cuyahoga Arts and Culture
The William R. Daniels Memorial Fund
Dorn Family Foundation
First Federal Lakewood
Joan Alice Ford
The Char and Chuck Fowler Family Foundation
Chann Fowler-Spellman and Ed Spellman
The George Gund Foundation
Bonnie J. Hagerman
Kulas Foundation
Bill and Joyce Litzler
The Vida C. Logan Fund
Robert Lugibihl
Ryan and Alysia McKean
William Minnich
John P. Murphy Foundation
The Nord Family Foundation
Nordson Corporation Foundation
Ohio Arts Council
Lee and Maria Parks
PNC Bank
The Reinberger Foundation
Sandy Sauder
Vivian H. Schulze Trust
Joyce and Walter Senney
The Kelvin and Eleanor Smith Foundation
Jan Soeder*
Three Arches Foundation
Turner Construction Company

FOUNDER'S CIRCLE

(\$5,000 to \$9,999)

Anonymous
Carol Barnak
Dale and Cindy Brogan
The George W. Codrington Charitable Foundation
FBC Chemical Corp.
Harry F. Fox and Emma R. Fox Charitable Foundation
Gallery Group, Inc.
Healthy Lakewood Foundation

The Laub Foundation
Nancy and John McMillan
Michael and Carol O'Brien
Anthony and Mary Rego
John A. Reynolds
Brad and Margaret Richmond
Jean Stell
Philip Wenk
Women's Board of Beck Center
Laird and Jennifer Wynn

BENEFACTOR'S CIRCLE

(\$2,500 to \$4,999)

Civista Bank
Doug Cooper
Syma Dar
Allison Dassani
Richard and Judy Fox
Cindy and Tim Friedmann
William Garrison and Mary Jo Mlakar
Harold L. and Patricia D. Williams Charitable Fund
Jackson Lewis P.C.
Terry and Dona Jones
KeyBank Foundation
Andrew L. Killian
Lakewood and Rocky River Rotary Foundation
Sean Malloy
Tess and Richard Neff
Pat and Jim Oliver
Jeffrey and Susan Ritter
Robert Half Recruiters & Employment Agency
Nancy and Jim Seibert
Sherwin Williams Foundation
The Walter V & Judith L Shipley Family Foundation
Stephanie Spahr
Ellen Todia and David Matthiesen
Ulmer and Berne LLP
Jane and Jim Vitou
Libby and Christopher White
Janice Young

CHAIRMAN'S CIRCLE

(\$1,000 TO \$2,499)

Anonymous (2)
Brenda and George Anthony
Elise and Steve Auvil

Kathleen A. Baskoff and Steven Schwarz
Cuyahoga County Board of Developmental Disabilities
Bober Markey Fedorovich
The Bonne Bell Family Foundation
Curt Brosky and Betty Tereck
Michael and Leslie Brown
Georgia A. Burley
Eddie-Lou and Lew Bush*
Nancy and Jack Calcott
Mary Beth Campbell and Mark Sistek
Cleveland Home Title Agency, Ltd.
Mary Coe
Hal Cooper
Corrigan Krause
Megan DeFranco
Mary Ann and Dave Dombrowiak
Joel and Bonnie Egertson
Cindy and Tom Einhouse
Larry and Rosemary Faulhaber
The Foell Family
The Giant Eagle Foundation
Dorothy Ginley-Bahm
Goodman Real Estate Services Group, LLC.
Gradient Think Tank
Chuck and Nancy Gustafson
Kathy and Ken Haber
Karol Hoeffler
Doug Hoffman and Ron Stach
Huntington National Bank
Brian Murphy
John and Mary Kay Jefferson
Emily Jett and Mark Getsay
Gary and Rose Juhnke
Kim and Nora Katzenberger
Edward Knotek
John Korol
Gerrit and Peg Kuechle
Karen Langenwalter
Kathleen Lawther
Rachelle Loraine and Tom Flynn
McDonald Hopkins, LLC
Kathleen McGorray and Bob Soffer
Medical Mutual
Margaux and Michael Murphy
The Music and Drama Club
Debbie L. Neale
Dr. and Mrs. Peter Nintcheff

Dave and Traci Nolan
Deborah and John O'Neill
Anne and Jack Palomaki
Jim and Barbara Pearce
Patrick and Sharon Perotti
Amy and Tom Petrus
Jeff and Nora Poore
John and Norine Prim
Donna Rae and Edward Smith
Karen Rockhold
Eugene and Marge Ruminski
Richard and Mary Sanders
Laura and David Sangree
Donna Rae and Edward Smith
Bill Spang
Bill Spence
Ann Spence
Art and Sherri Stehlik
Theater Alliance of Beck Center
Kenneth and Martha Taylor
Landon Tracey and Corey Donovan
Tracey
Gina Vernaci and Bill Hilyard
Thomas Wagner and Malinda
Smyth
Joe and Kathy Ward
Jonathan Ward
Mary C. Warren
Margaret Weitzel
Suzanne Wiedemer
Dave Willett and Steve Meka

PRESIDENT'S CIRCLE

(\$500 TO \$999)

Ann and Bob Aber
Thomas and Joann Adler Family
Philanthropic Fund
Mark and Cynthia Bacon
Robert Bade and Linda Hurley
Bank of America Charitable
Foundation
Benevity
George and Sandra Berendt
Ruth B. Bertrand
Amy Holtshouse Brennan
Marianne Byrne
Sally Carr
Douglas Cass
Caroline Chesebrough
Jane Christyson and Robert
Mahoney
Rosemary Corcoran
Carol Crowe
Jeff and Lori Culliton
Michael and Amy Daso
Steve DeJohn
David Delgado and Linda Springer
Sherrie Desmond
The Dominion Energy Charitable
Foundation
Equitable Advisors
Jon and Mary Fancher

Anonymous
Judy and Steve Fesko
Mary Eileen Fogarty
Thomas and Mary Ellen Fraser
A.J. Cianflocco and Mary Anne
Garvey
Henry Hilow and Judy Ghazoul
Hilow
Frances Floriano Goins
Gravitas Ventures
John and Carol Guska
Scott Hannah and Bill Green
Madison Development Co, LLC
James Keily
Jack and Kim Kellogg
Carol Klar
Barb and Charlie Koch
Mickey and Patty Krivosh
Dennis Lansdowne
Latham Family
Matt and Angela Lay
LGBT Community Center of Greater
Cleveland
Madison Development Co. LLC
Mary and Brian Marita
Scott Montgomery
Jack and Lois Mowry
Music Box
Rick and Jane Nash
Barbara & Bob Paynter
Timothy and Jen Powers
Tom and Helen Rathburn
Heather Richmond
Martin Saltzman
Sue Schroer
Astri Seidenfeld
Trey and Erin Senney
Mark and Nancy Seryak
Parvathi and Seth Shalov
Brian Sinchak
Kathleen J. St. John
Mr. and Mrs. John Steinbrunner
Maureen and Raymond* Votpyka
Nelson Wagner
Kristine Wellman
West Shore Unitarian Universalist
Church
Judith and Walter Wright
Bill and Ann Zabkar
Genny Zarnick
Allison Tanner Gill
Paris Lampkins
Pat and Tina Miller

DIRECTOR'S CIRCLE

(\$250-\$499)

Cathy and John Aldrich
AmazonSmile Foundation
Anonymous
State Senator Nickie Antonio and
Jean Kosmac
Mark J. & Bonnie O. App

M. Karen Aylward
Rose Babington
Dede Baker
Baldwin-Wallace University
Bill and Janet Bird
Edward Brzytwa
Janice and Jack Campbell
Richard Castele
Colleen Clark-Sutton and Tom
Sutton
Joanne and Tim Clemens
Ray and Dawn Cushing
Marilyn Cvetic
Jackie Discenza
Susan Duffy
Eaton Charitable Fund
Scott and Kris Fisher
Jennifer and Frank Fitchwell
Colleen Flennoy
Eileen and John Gallagher
Franca Garofalo
David and Sarah Gedeon
Allison Gill
Ed and Mary Jane Hadaway
John W. Hollopetre
Maxine W. Houck
Carolyn Hufford and Thomas Yanks
Gail Jackson
Andrew Janick
Susan Joplin
Mary and Chris Kay
David Kuentz
Lakewood Catholic Academy
Betsy Lambert and Family
Alice Lang
Lynn and Mary Lazzaro
Kathleen Legg
LuAnn Leonard and Brian Byers
Frederic Levine and Janine Martyn
Adele Malley
James and Ellen Marsey
Mickey and Larry Mencin
Michael and Peggy Mizen
Lindsey Moffat
Shawn Monaghan and Gregory
Plotnikoff
Karen Moore
Larry and Shelly Napolitan
Sue Pedro
Silvia Pelton
Pledgeling Foundation
PNC Foundation Matching Gift
Program
Judy and John Pyke
Mark Reinbrecht
Melissa Richmond and William
Watterson
Carol Rini
Linda Rocchi
Keith and Donna Rush
Ron Rydarowicz
Lori Samuels

NOISES OFF

MARCH 24 - APRIL 16, 2023



**FOR TICKETS
SCAN CODE**



Written by Michael Frayn | Directed by Scott Spence

Conceived when English playwright Michael Frayn was watching a performance from the wings, he said, “It was funnier from behind than in front, and I thought that one day I must write a farce from behind.” And write a fabulous farce he did! This play within a play was meta before meta was meta. Come watch a tennis match of hilarious comedy.

“Noises Off is a precision-timed laugh machine”

—Time Out New York

Andi Saunders
 William Schabel
 Mary Lynne and David Slife
 Arthur E. Spector
 Timothy C. Stevens
 David Priest
 Al Stohr and Lynn Staley Stohr
 Karin Stone
 Nick and Judy Stowe
 K.K. and Joe Sullivan
 Arthur L. Thomas
 Kenneth S. Trump and Family
 Sara & Jason Verderber
 Robert C. and Emily C. Williams

Elizabeth E.
 Cindy Einhouse
 Aimee Guzowski
 Rob Hendry
 Ann Klonowski
 Jack Lazzaro
 Ingrid Matera
 Mickey Mencin
 Iris November
 Mike and Carol O'Brien
 Garretson Oester
 M. Patricia Oliver
 Douglas N. Puskas
 Tom and Helen Rathburn
 John Reynolds
 Ally Rovito
 Lynda Sackett
 Aria Sova
 Thomas Wagner
 The Watts Family
 Alex Watts' Bar Mitzvah
 Daniel Weddell
 Jason Weiner
 Amy Wooley
 The Youth Theatre Program!

Walt Campbell, Mary Campbell Nir, &
 Margaret Campbell
 Carol Culp
 Leah R. Dedrick
 Rosemarie Feighan DeJohn
 Virginia Fisher
 Pam Gallagher
 Darla R. Hall
 William J. Harper
 Ellen Huber
 Barbara Hunter
 Kevin Kelly
 Faith Killius
 Douglas C. Kline
 Eleanor F. Kushnick
 Bruce W. Lang
 Janet Lasley
 Hester Lewellen
 Mary Lou McKulic
 George Nakley
 Barbara Nussbaum King
 Raymond Reali
 Donald F. Santa-Emma
 Nancy A. Score
 Stan Spence
 Marie Sterbenz
 G.D. "Leo" Stewart, II
 Barbara Swearingen
 Luta Tooney Jones
 Dr. Raymond Votyпка
 Mary Ellen Zimmerman

*indicates deceased

WITH SPECIAL THANKS

Cuyahoga County residents through
 Cuyahoga Arts and Culture

Beck Center for the Arts would like to
 thank those who have given gifts in
 honor of the following individuals:

HONORARY GIFTS

Joel and Teresa Andreani
 Rita Barniak
 Beck Center Dance Teachers
 Eileen, Olivia and Cameron Brady
 Colleen Clark-Sutton & Tom Sutton
 Doug Cooper
 Rosemary Corcoran

MEMORIAL GIFTS

Joseph Bandille
 Rita A. Barniak
 Emily Baskoff
 Ruth Bertrand
 Aaron Boron
 Amy Brotherton Staskus

Beck Center's Youth Theater program is supported by The Mary Ward Scholarship Fund.

Beck Center's Dance Program is supported by the Lynda Sackett Endowment for Dance Education and the James Kurtz Memorial Endowment Fund.

The Community West Foundation is a proud supporter of Creative Arts Therapies at Beck Center for the Arts.

Creating Our Future Campaign Contributors

We gratefully acknowledge the support of the following individuals, corporations, foundations, government grants, and organizations that have contributed \$1,000 or more to Creating Our Future: The Campaign for Beck Center. For more information on naming opportunities and touring our renovations, please contact Director of Development, Kristen Levy, at klevy@beckcenter.org.

With 99% of the \$6.7M goal achieved, we are eager to finish fundraising in the near future so that renovations can be complete during our 90th season in 2023. All donors of \$1,000 or more have the opportunity to be recognized on a new donor wall that will be installed in the main lobby to celebrate the capital campaign completion. Please visit beckcenter.org/give for more information and to make a lasting impact for families in future generations.

<p>\$1,000,000+ Joyce and Wally Senney</p>	<p>\$100,000 - \$499,999 The Callahan Foundation The Char and Chuck Fowler Family Foundation Kathy and Ken Haber Bonnie J. Hagerman Doug Hoffman and Ron Stach Bill and Joyce Litzler William Minnich</p>	<p>Oatey Foundation John A. Reynolds Sandra Sauder William and Susan Schmitt The Kelvin and Eleanor Smith Foundation Ellen Todia and David Matthiesen WWMR Foundation</p>
<p>\$500,000 - \$999,999 Chann Fowler-Spellman and Ed Spellman State of Ohio</p>		

\$50,000 - \$99,999

Dale and Cindy Brogan
 The George W. Codrington
 Charitable Foundation
 Doug and Karen* Cooper
 David Deming
 Dorn Family Foundation
 Mary and Tom Holland
 Michael and Carol O'Brien
 Lee and Maria Parks
 Pam and Tom Smith
 Michael and Wendy Summers
 Women's Board of Beck Center

\$25,000 - \$49,999

Anonymous
 Joel and Bonnie Egertson
 Fidelity Charitable Gift Fund
 Charlotte and Charles Fowler
 Richard and Judy Fox
 The William O and Gertrude Lewis
 Frohring Foundation
 The Giant Eagle Foundation
 Charles and Marie Grossman
 Terry and Dona Jones
 Gerrit and Peg Kuechle
 Kulas Foundation
 Dennis and Kim Lansdowne
 Merrill Lynch & Co. Foundation,
 Inc.
 John P. Murphy Foundation
 The Nord Family Foundation
 Tim Penton and Jay Gardner
 Peter Ranney
 Brad and Margaret Richmond
 Lynda Sackett and Bill Knoble*
 Kevin Sauder
 The Kent H. Smith Charitable Trust
 Donald * and Karen Strang
 Margaret G. Weitzel

\$10,000 - \$24,999

Anonymous (4)
 Barber & Hoffman, Inc.
 Carol Barnak
 Bialosky & Partners Architects
 Curt Brosky and Betty Tereck
 Commercial Interior Resources,
 Inc.
 Elaine and David* Cook
 Mary Anne and Byron Crampton
 Dependable Painting Company
 Eaton Charitable Fund
 Cindy and Tom Einhouse
 David Greenspan and Mary Kim
 Elkins
 Thomas and Mary Ellen Fraser
 Cindy and Tim Friedmann
 Bill Garrison and Mary Jo Mlakar
 Charles and Nancy Gustafson
 The Hershey Foundation
 Elda C. Krach
 Nancy C. Krueger
 Rotary Club of Lakewood-Rocky

River
 Sean Malloy
 Mickey and Larry Mencin
 Pat and Jim Oliver
 Anne and Jack Palomaki
 Anthony and Mary Rego
 Laura and David Sangree
 Carolyn P. Seelbach*
 Gina Vernaci and Bill Hilyard
 Thomas Wagner and Malinda
 Smyth
 Mary C. Warren
 Laird and Jennifer Wynn

\$5,000 - \$9,999

Rachel Abernethy
 American Endowment Foundation
 Anonymous
 Mark and Cynthia Bacon
 Ruth B. Bertrand
 The Bonne Bell Family Foundation
 Michael R. and Leslie Brown
 Monica Brown
 Georgia A. Burley
 Nancy and Jack Calcott
 Syma Dar
 Michael and Amy Daso
 The Dominion Energy Charitable
 Foundation
 David and Virginia Estrop
 Larry and Rosemary Faulhaber
 Pam Gallagher*
 Dorothy Ginley-Bahm
 Kim and Nora Katzenberger
 Andrew L. Killian
 John and Judy Kropf
 Lakewood-Rocky River Sunrise
 Rotary Club
 William LaPlace
 Carol Latham
 Terrence and Karen McHugh
 Ryan and Alysia McKean
 Nancy and John McMillan
 Patricia and George Miller
 Monica and Keith Owen
 Barbara and Bob Paynter
 Jeff and Nora Poore
 Donna Rae and Edward Smith
 Art and Sherri Stehlik
 Theater Alliance of Beck Center
 Richard and Gail Tanner
 Landon Tracey and Corey Donovan
 Tracey
 Turner Construction Company
 Philip Wenk

\$1,000 - \$4,999

Dena and Daniel Adler
 Adobe Systems Incorporated
 Joel and Teresa Andreani
 Anonymous (2)
 Brenda and George Anthony
 State Senator Nickie Antonio and
 Jean Kosmac

AXA Advisors LLC
 Sam and Chrysa Babic
 Tom and Jenni Baker
 Kathleen A. Baskoff and Steven
 Schwarz
 Kathryn Berkshire
 Liz and David Breudigam
 Robert and Mary Calsin
 Patrick Carroll and Diana
 D'Alessandro
 Lynda Carter
 Charities Aid Foundation of
 America
 Colleen Clark-Sutton and Tom
 Sutton
 Community West Foundation
 Hal and Connie* Cooper
 Rosemary and Richard* Corcoran
 Tim and Tracy Coughlin
 Joanna and Marc D'Agostino
 Mary Beth and Jeff DeClerck
 David Delgado and Linda Springer
 Tom and Tricia Dent
 Sherrie Desmond
 Gregory Good and Adrienne
 Embery-Good
 Victor and Janet Erml
 Jon and Mary Fancher
 Jenny and Ralph Febbo
 FGI Foundation
 Jim and Mary Gagen
 Henry Hilow and Judy Ghazoul
 Hilow
 Joe and Peggy Gibbons
 Kathy Goepfert
 William Gorton and Susie
 Blackburn
 George Graham
 Gerald and Pennie Gray
 Michelle Hillstrom
 Barbara Hueter and Andrew Zajac
 Hyland Software, Inc.
 Impel Creative, Inc.
 John and Mary Kay Jefferson
 Emily Jett and Mark Getsay
 Robert and Betty Karras
 Mary and Chris Kay
 KeyBank Foundation
 Cathy and Peter Kuhn
 Richard and Laura Little
 Tony Marini
 Mary and Brian Marita
 Cindy and Jake Marx
 Freida McGee and Michael
 Wochna
 Kathleen McGorray and Bob Soffer
 Dave and Val Mechenbier
 Marcello and Shelley Mellino
 Carol and Dale Miller
 Colin and Sarah Moeller
 Lauren Mueller
 Dr. and Mrs. Peter Nintcheff
 Dave and Traci Nolan
 John O'Brien

Deborah and John O'Neill
Naomi Opdycke
Jim and Barbara Pearce
PNC Foundation Matching Gift
Program
Donna and George Puskas
Carol and Bob Richardson
John J. Ritchey
Jeffrey and Susan Ritter
Karen Rockhold
Brian Sapola and Jessica Lovich-
Sapola
Sharon and Steve Schuldt
The Herb Score Family
Mark and Nancy Seryak
Sherwin-Williams Company

Brian Sinchak and Lakewood
Catholic Academy
Victoria and Daniel Smigelski
Jan Soeder*
Stephanie Spahr
Bill Spence
Ann Spence
The Staub Family
Mr. and Mrs. John Steinbrunner
Thomas and Melissa Stickney
Bob Taylor and Jeff Herrmann
Arthur L. Thomas
Terry and Candace Vincent
Kathy and Gregg Wasilko
Karen and Jeffrey Weber
Dick West

Judith and Walter Wright
Karen Youngstrom

**indicates deceased*

Helen Brown Society

All of us here at Beck Center for the Arts would like thank those who let us know they have included Beck Center in their will or estate plans. Members of the Helen Brown Society are recognized in our playbills, invited to select events and performances, and ensures future generations will have dynamic arts education and performance in our community. For more information regarding the Helen Brown Society or planned giving, please contact our Director of Development, Kristen Levy, at klevy@beckcenter.org.

Rachel Abernethy
Anonymous (3)
Kenneth C. Beck Estate
Ruth B. Bertrand
Estate of Nicholas C. Brodella
The Helen E. Brown Trust
Jean Bulicek Estate
Milan G. Busta*
Nancy and Jack Calcott
Mary Beth Campbell and Mark
Sistek
Rosemary Corcoran
Helen T. Corns*
Cotabish Charitable Remainder
Trust
Mary Anne and Byron Crampton
The William R. Daniels Memorial
Fund
Norma M. Dolezal
Estate of Janet L. Dreyer
Cindy and Tom Einhouse
David Greenspan and Mary Kim
Elkins
Estate of Juanita V. English
Dianna and Michael Foley
Virginia Q. Foley*
Joan Alice Ford
Estate of Lorna Hart
Mr. and Mrs. James P. Hendy
Doug Hoffman and Ron Stach

The Pauline Hudson Estate
Yoshiko Ikuta*
Nozomi Ikuta
The Virginia Jones Fund
Andrew L. Killian
R. Robert Koch Trust
Vilma L. Kohn
Pauline Kurtz
The Vida C. Logan Fund
Kathleen McGorray and Bob Soffer
John and Mary McGowan
Lisa Mackey McLean and David
McLean
Maurice J. Mitchell
Dave and Traci Nolan
Estate of Donald A. Nykanen
Lee and Maria Parks
William & Patricia Reichard
Karen Rockhold
Ethel Scheingold Estate
William and Susan Schmitt
Vivian H. Schulze Trust
Nancy Score*
J.R. Shaw and Dek Ingraham
Mr. Howard Egert, Esq.*
Gerry and Cheryl Smith
Vince Smith
Estate of Mary Ruth Steele
Estate of Jeannette E. Stewart
Max W. Thomas

Hugh Thurnauer Trust
Family of Hugh Thurnauer
Ellen Todia and David Matthiesen
Thomas Wagner and Malinda
Smyth
Joe and Kathy Ward
Sally and Jim Weakley
Margaret Weitzel
Estate of Thomas Williams

It's time for a new identity.

**One that tells the story of creativity
in Ohio and illustrates it.**



Expression is an essential need.

**By better illustrating our story,
we can better help you express yours.**

Complete the story at oac.ohio.gov/identity.

30 EAST BROAD STREET, 33RD FLOOR, COLUMBUS, OHIO 43215-3414 | 614-466-2613

OAC.OHIO.GOV | @OHIOARTSCOUNCIL | #ARTSOHIO



SAVE THE DATE: OCTOBER 19 - 22, 2023

Join Beck Center for the Arts hosts in October of 2023 for an immersive NYC Broadway Experience. Guests will enjoy the following:

- Private salon discussion and performances by Broadway stars
- Exclusive tours of Broadway theaters
- Excellent seats to the best shows on Broadway
- Behind-the-scenes adventures
- Luxury learning experience
- Hear theater industry insider scoops
- NYC architecture tours
- Immersive learning experience
- Educational experience
- High quality and high-class experience for theater and architecture-lovers



PROFESSIONAL FLARE FOR THOSE 
REVOLTING CHILDREN!

BRILLIANT COSTUMES FOR

WALK TALK
Matilda

THE MUSICAL
AND EVERYTHING ELSE!

Costume rentals from the Beck Center production are available now. We have a growing inventory of rental pieces to suit your needs, and can even take custom orders for that special something!



BETTY'S COSTUME CREATIONS & RENTALS
 Madison, Ohio
www.bettypitcher.com
 330.329.3505
bettystcostumecreations@gmail.com

BUY THE BOOK

Now available on
Amazon.com



CELEBRATING OUR PAST - CREATING OUR FUTURE

This is the first history book about **Beck Center for the Arts** covering the organization's nearly 90 years of existence.

Available for **\$29.95** exclusively on **Amazon.com**, the book is printed and delivered on-demand, with all profits going to an endowment for Beck Center for the Arts. This collectable coffee table paperback book is 196 pages in length, with full-color photos starting with an explanation about the country's "Little Theatre Movement," the early days of the organization as "The Guild of the Masques," to the evolution of Lakewood Little Theatre and the education programs, through today. Vital collaborations and historic news articles are included along with vibrant production shots of plays and musicals throughout the years. Stories of challenges and triumphs abound, and the birth of many of Beck Center's stars, especially in theater and dance, are regaled.

 **Beck Center**
-FOR THE arts-